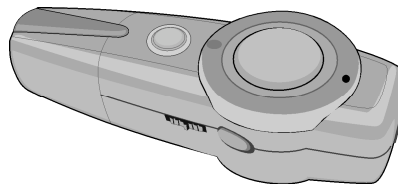




**VX4001**

**User's Guide**

*Personal MP3/WMA Player  
with Voice Recorder*



**Before operating this product,  
please read these instructions completely.**

## PRECAUTIONS

### **COPYRIGHT:**

- Distributing copies of MP3, WMA, WMA with DRM tracks without permission is a violation of international copyright laws.

### **SAFETY:**

- Vibration experienced during walking or exercising will not affect the player. However, dropping the player or dropping a heavy object on the player may result in damage or sound distortion.
- Avoid spilling any liquid onto or into the player.
- Do not leave the player in a location near heat sources; in a location subject to direct sunlight, excessive dust, sand, moisture, rain or mechanical shock; on an unlevel surface; or in a car with the windows closed during periods of excessive heat.

### **ROAD SAFETY:**

- Do not use headphones while driving, cycling or operating any motorized vehicle. It may create a traffic hazard and it is illegal in some areas. It can be potentially dangerous to play your headset at a high volume while walking, especially at pedestrian crossings. You should exercise extreme caution or discontinue use in potentially hazardous situations.

### **FCC WARNING:**

- This equipment may generate or use radio frequency energy. Changes or modifications to this equipment may cause harmful interference unless the modifications are expressly approved in the instruction manual. The user could lose the authority to operate this equipment if an unauthorized change or modification is made.

#### **FCC DECLARATION**

This device complies with Part 15 of the FCC rules. Operation is subject to the following two conditions: 1) This device may not cause interference, and 2) This device must accept any interference received, including interference that may cause undesired operation.

**Warning:** Changes or modifications to this unit not expressly approved by the party responsible for compliance could void the user's authority to operate the equipment.

**NOTE:** This equipment has been tested and found to comply with the limits for a Class B digital device, pursuant to Part 15 of the FCC Rules. These limits are designed to provide reasonable protection against harmful interference in a residential installation. This equipment generates, uses and can radiate radio frequency energy and, if not installed and used in accordance with the instructions, may cause harmful interference to radio communications.

However, there is no guarantee that interference will not occur in a particular installation. If this equipment does cause harmful interference to radio or television reception, which can be determined by turning the equipment off and on, the user is encouraged to try to correct the interference by one or more of the following measures:

- Reorient or relocate the receiving antenna.
- Increase the separation between the equipment and receiver.
- Connect the equipment into an outlet on a circuit different from that to which the receiver is connected.
- Consult the dealer or an experienced radio/TV technician for help.

*Shield cable must be used with this unit to ensure compliance with class B FCC limits.*



**Dear Customer:**

Selecting fine audio equipment such as the unit you've just purchased is only the start of your musical enjoyment. Now it's time to consider how you can maximize the fun and excitement your equipment offers. This manufacturer and the Electronic Industries Association's Consumer Electronics Group want you to get the most out of your equipment by playing it at a safe level. One that lets the sound come through loud and clear without annoying blaring or distortion and, most importantly, without affecting your sensitive hearing.

Sound can be deceiving. Over time your hearing "comfort level" adapts to higher volumes of sound. So what sounds "normal" can actually be loud and harmful to your hearing. Guard against this by setting your equipment at a safe level BEFORE your hearing adapts.

**To establish a safe level:**

- Start your volume control at a low setting.
- Slowly increase the sound until you can hear it comfortably and clearly, and without distortion.

**Once you have established a comfortable sound level:**

- Set the dial and leave it there.

Taking a minute to do this now will help to prevent hearing damage or loss in the future. After all, we want you listening for a lifetime.

**We Want You Listening For A Lifetime**

Used wisely, your new sound equipment will provide a lifetime of fun and enjoyment. Since hearing damage from loud noise is often undetectable until it is too late, this manufacturer and the Electronic Industries Association's Consumer Electronics Group recommend you avoid prolonged exposure to excessive noise. This list of sound levels is included for your protection.

**Decibel**

<u>Level</u>	<u>Example</u>
30	Quiet library, soft whispers
40	Living room, refrigerator, bedroom away from traffic
50	Light traffic, normal conversation, quiet office
60	Air conditioner at 20 feet, sewing machine
70	Vacuum cleaner, hair dryer, noisy restaurant
80	Average city traffic, garbage disposals, alarm clock at two feet

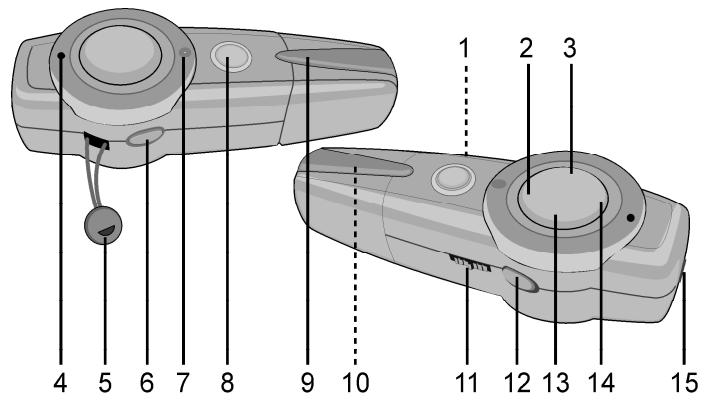
**THE FOLLOWING NOISES CAN BE DANGEROUS UNDER CONSTANT EXPOSURE:**

90	Subway, motorcycle, truck traffic, lawn mower
100	Garbage truck, chain saw, pneumatic drill
120	Rock band concert in front of speakers, thunderclap
140	Gunshot blast, jet engine
180	Rocket launching pad

Information courtesy of the Deafness Research Foundation.



## LOCATION OF CONTROLS

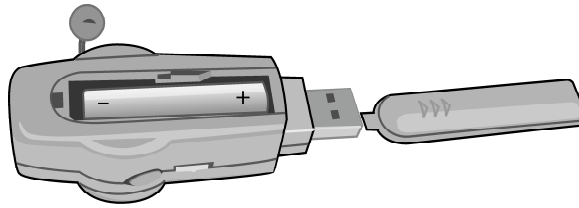
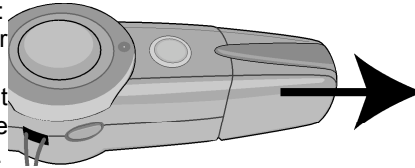


1. Battery Compartment (Bottom of Unit)
2. VOLUME Down Button
3. Skip/Search ◀◀ Button
4. Built-in Microphone
5. Neck Strap Connector
6. DEL/A-B Button
7. Indicator
8. Play/Pause/Power On/Off Button
9. USB Flash Plug Cover
10. USB Flash Plug (Inside Compartment)
11. HOLD Switch
12. REC/BBS/Mode Button
13. Skip/Search ▶▶ Button
14. VOLUME Up Button
15. Headphone Jack

## BATTERY INSTALLATION

When the battery is low, the Function indicator will flash in intervals of red and green. Replace the battery as follows:

1. Remove the USB Flash Plug cover by sliding it out.
2. Open the battery door by sliding it towards the arrows on the compartment and then lifting it off.
3. Insert one (1) "AAA" battery as shown in the figure below. Alkaline batteries are recommended for the longest playing time.
4. Replace the battery compartment door and the USB Flash Plug Cover.

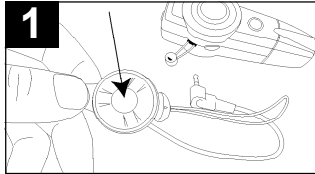


### BATTERY PRECAUTIONS

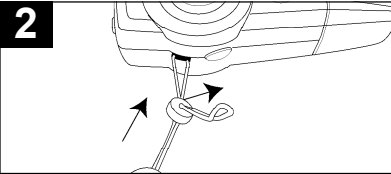
Follow these precautions when using a battery in this device:

1. Use only the size and type of battery specified.
2. Be sure to follow the correct polarity when installing the battery as indicated. Reversed batteries may cause damage to the device.
3. If the device is not to be used for a long period of time, remove the battery to prevent damage or injury from possible battery leakage.
4. Do not try to recharge batteries not intended to be recharged; they can overheat and rupture. (Follow battery manufacturer's directions.)

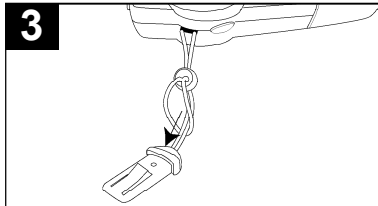
## ATTACHING THE NECK STRAP



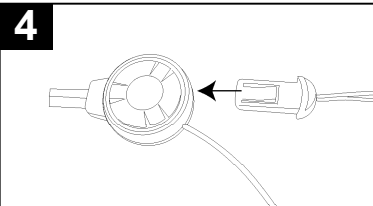
**1**  
Press the button and the connecting clip will spring out.



**2**  
Insert the rope through the hole at the neck strap connector.



**3**  
Fix the connecting clip to the neck strap connector.



**4**  
Connect the connecting clip back to the headphone connector, making sure that the tab's convex area is facing to the top. Then insert it back into the headphone connector until it locks into place.



## INSTALL "DIGITAL AUDIO PLAYER" SOFTWARE

### TO INSTALL THE "DIGITAL AUDIO PLAYER" CD SOFTWARE

**For Windows ME, Windows2000 or Windows XP:**

Windows will automatically detect the audio player without installing the CD software when the USB cable is connected.

**For Macintosh OSX:**

Macintosh OSX will automatically detect the audio player without installing the CD software. Do not install the software when using a Macintosh.

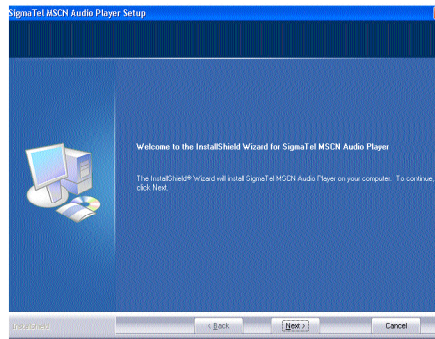
**For Windows98SE:**

The USB mass storage function will not be activated without driver installation. To activate the USB mass storage function, please use the installation CD-Rom to install the driver.

For Windows 98SE, if you are connecting your player to your computer for the first time, please follow these instructions:

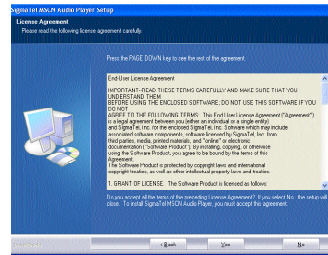
**Procedure to Install Player Driver**

1. Insert the Installation CD-Rom into the CD Drive, then, if an installation screen doesn't automatically appear, double click SETUP.EXE to start the installation process.
2. At the Welcome screen, click NEXT.

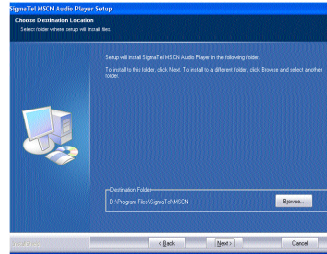


## WINDOWS 98 DRIVER INSTALLATION

3. Read the License Agreement, then click YES.



4. At the Setup screen, click NEXT. It is recommended to leave the destination folder as it is.

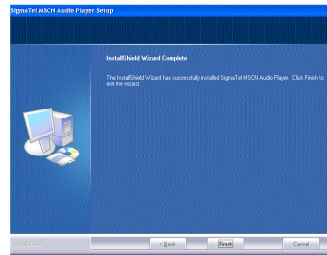


5. At the Program Folder screen, click NEXT. It is recommended to leave the program folder as it is.



## WINDOWS 98 DRIVER INSTALLATION

- When finished, the InstallShield Wizard Complete screen will appear. Click FINISH to exit the Install program.



- When the installation has completed, the new program, "SigmaTel MSCN Audio Player", will be added to the PROGRAM menu on your computer.

## DOWNLOADING AND TRANSFERRING FILES

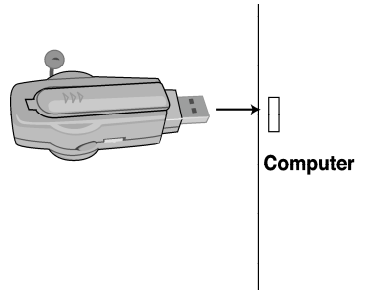
### TRANSFERRING FILES

You can download digital music files from the Internet or use encoding software to convert music that you have on an audio CD into MP3 or WMA format. Once these files are stored on your computer you can easily copy them to your player.

Connect your player to the USB port on your computer using the Flash Plug as shown (the LED indicator will light green).

A "Removable Disk" window will appear in your My Computer folder which is the player's internal memory. To add more files

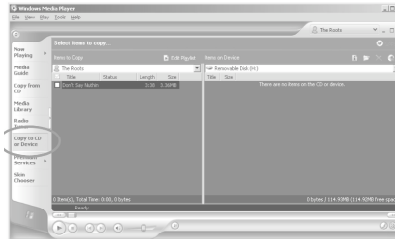
and songs to your player simply drag and drop MP3 or WMA files from anywhere on your computer into the "Removable Disk" window. When you are finished, see the Remove Hardware procedure on page 13 before disconnecting the player.



### DOWNLOADING WMA FILES WITH DRM USING WINDOWS MEDIA PLAYER 9

To download WMA files with DRM, follow the procedure described below. If you do not have "Windows Media Player 9" on your computer, go to [www.Microsoft.com](http://www.Microsoft.com) to download and install this software. Before beginning the procedure please turn the unit ON and connect the unit to the computer as described above.

1. Open the "Windows Media Player Browser" and click on "Copy to CD or Device".

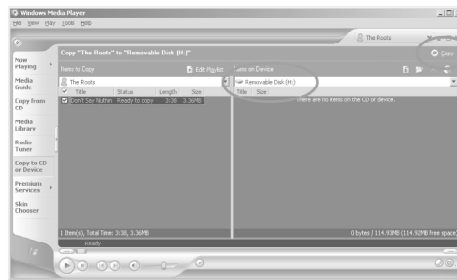


## DOWNLOADING AND TRANSFERRING FILES

2. Click on the “Items to Copy” pull-down menu to locate the music files you wish to download. Make sure to tick the box next to the files drop down menu.



3. Select the Portable Device you want to copy to from the “Items on Device” drop-down menu. Click “Copy” to start transferring the DRM files onto your unit.



4. After you have downloaded all the desired files to your unit, follow the “Safely Remove Hardware” procedure described on the next page.

## SAFELY REMOVE HARDWARE

### SAFELY REMOVING YOUR PLAYER FROM THE COMPUTER

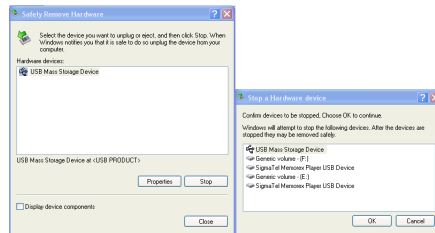
**NOTE:** To avoid damage to your player or data loss, always follow the procedure listed below before disconnecting your player from the USB port on your computer.

Using your mouse, double click the "Safely Remove Hardware" icon on the task bar.



'Safely Remove Hardware' icon

From the "Safely Remove Hardware" window, select "USB Mass Storage Device" and click the "Stop" button. The "Stop a Hardware Device" window will pop-up as shown: Click "OK". When the "Safe to Remove Hardware" window is displayed, you may remove the player from the USB cable or remove the USB cable from the computer.



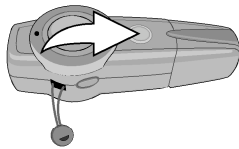
### NOTES:

- If the "Safely Remove Hardware" icon is not displayed on the task bar, please double click on My Computer. Right click on "Removable Disk" and left click on "Eject". Then it is safe to remove the player from the computer.
- The "Safely Remove Hardware" procedure is not necessary for Win98 and Win98SE users.

## OPERATION

### TURNING THE POWER ON

1

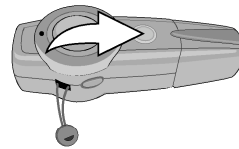


MAKE SURE THE HOLD SWITCH IS IN THE "OFF" POSITION.

To turn the unit on, press the Play/Pause/Power On/Off button; the indicator will light solid green and then will flash green rapidly.

### TO TURN UNIT OFF

1



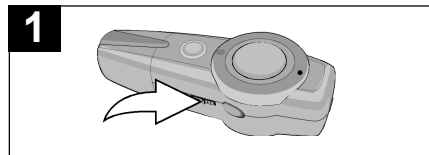
To turn the unit off, press and hold the Play/Pause/Power On/Off button until the indicator lights solid red and then turns off.

### HEADPHONE JACK

Plug the headphones (included) into the Headphone jack on the side of the unit.

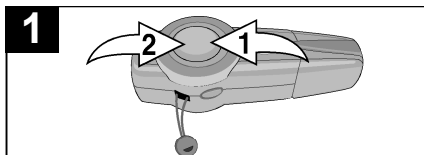
## OPERATION (CONTINUED)

### HOLD SWITCH



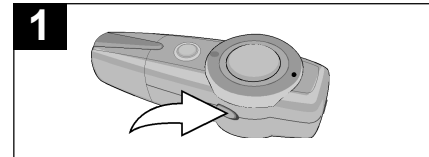
Slide the HOLD switch to the ON position to lock the buttons. This is useful when you do not want the track changed by accidentally pressing a button. Slide the HOLD switch to the OFF position to cancel the Hold function.

### VOLUME BUTTONS



To control the volume, simply press the VOLUME Down ❶ or Up ❷ button during Music or Voice playback. For Music Playback mode, the indicator will flash red once each time a button is pressed. For Voice Playback mode, it will flash green.

### BASS BOOST (MP3/WMA files only)



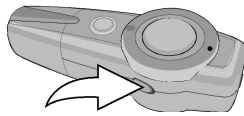
While in Music Playback mode, to enhance the overall bass sound, press the REC/BBS/Mode button; the indicator will flash red once. Press again for normal bass sound.



## OPERATION—MUSIC PLAYBACK MODE

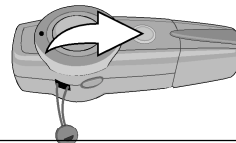
### TO LISTEN TO MP3s/WMA

**1**



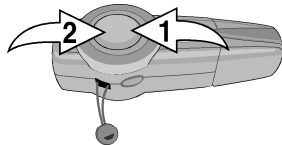
If the unit is in the Voice mode, enter the Music mode by pressing and holding the REC/BBS/Mode button for three seconds; the indicator will flash green rapidly.

**2**



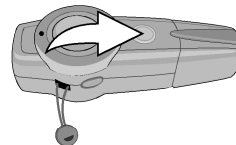
Press the Play/Pause/Power On/Off button to start playback; the indicator will flash green slowly.

**3**



To control the volume, simply press the VOLUME Down ❶ or Up ❷ button; the indicator will flash red once each time a button is pressed.

**4**



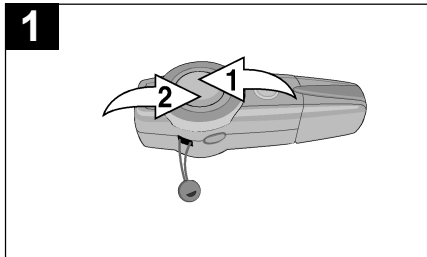
Press and release the Play/Pause/Power On/Off button to pause the music; the indicator will flash green rapidly. Press again to resume playback; the indicator will resume flashing green slowly.



**NOTE:**

- See pages 11 and 12 for information on uploading MP3 and WMA files to this unit.

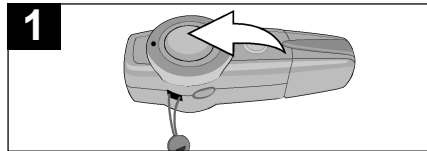
## OPERATION—MUSIC PLAYBACK MODE (CONTINUED)



### HIGH-SPEED MUSIC SEARCH

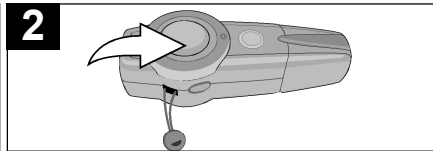




During playback, press and hold the Skip/Search /Reverse  buttons to move the player forward or backward within a file to locate a specific musical passage; the indicator will flash green rapidly. The player will move forward or backward at high speed as long as the button is held. When you release the button, normal playback will resume.

### FORWARD/REVERSE SKIP



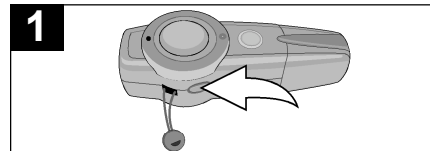
Press the Skip/Search  button to advance the player to the beginning of the next file. Press the Skip/Search  button repeatedly to advance the player to higher-numbered files.



Press the Skip/Search  button to move the player back to the beginning of the currently playing file. Press the Skip/Search  button repeatedly to move the player back to lower-numbered files.

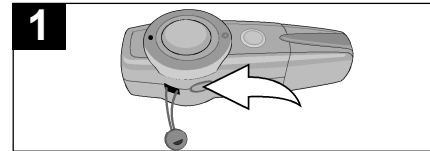
## OPERATION—MUSIC PLAYBACK MODE (CONTINUED)

### DELETING A FILE

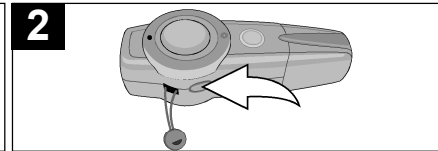


While playing the file you want to delete, press and hold the DEL/A-B button until the indicator lights green. Release the button; the playing file will be deleted and the unit will enter the Stop mode.

### A-B REPEAT



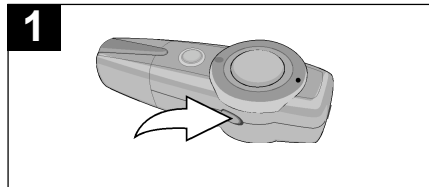
To repeat a specific segment during playback of a music file, press the DEL/A-B button once at the point you want to start recording; the indicator will flash red once and then continue flashing green.



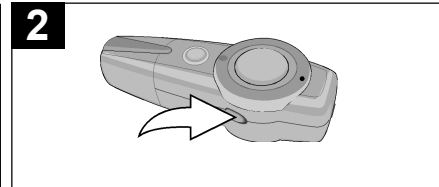
Press the DEL/A-B button once at the point you want to end recording; the indicator will flash red once and then repeat the segment continuously until the DEL/A-B button is pressed again.

## OPERATION-VOICE MESSAGE MODE

### RECORDING A VOICE MESSAGE



If the unit is in the Music mode, enter the Voice mode by pressing and holding the REC/BBS/Mode button for three seconds; the indicator will flash red rapidly.



To start recording, press the REC/BBS/Mode button; the indicator will light solid red. Speak into the microphone at a normal tone of voice. To stop recording, press the REC/ BBS button again; the indicator will resume flashing red.

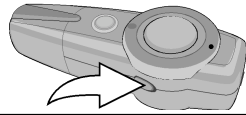
**NOTE:**

- The recording is not affected by the Volume setting as the volume is set automatically.

## OPERATION-VOICE MESSAGE MODE (CONTINUED)

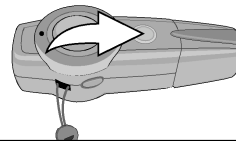
### PLAYING A VOICE MESSAGE

**1**



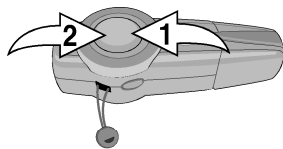
If the unit is in the Music mode, enter the Voice mode by pressing and holding the REC/BBS/Mode button for three seconds; the indicator will flash red rapidly.

**2**



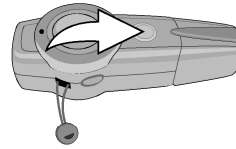
Press the Play/Pause/Power On/Off button to start playback; the indicator will flash red slowly.

**3**



To control the volume, simply press the VOLUME Down ❶ or Up ❷ button; the indicator will flash green once each time a button is pressed.

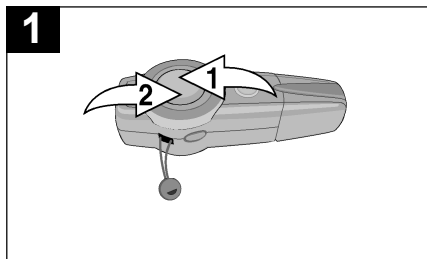
**4**



Press and release the Play/Pause/Power On/Off button to pause the voice; the indicator will flash red rapidly. Press again to resume playback; the indicator will resume flashing red slowly.

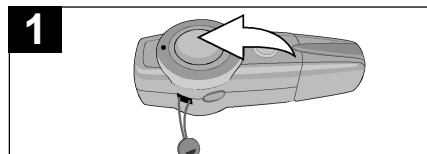
## OPERATION—VOICE MESSAGE MODE (CONTINUED)

### HIGH-SPEED MUSIC SEARCH

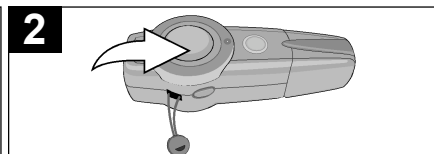


During playback, press and hold the Skip/Search **▶▶** **◀◀** buttons to move the player forward or backward within a file to locate a specific musical passage; the indicator will flash red rapidly. The player will move forward or backward at high speed as long as the button is held. When you release the button, normal playback will resume.

### FORWARD/REVERSE SKIP



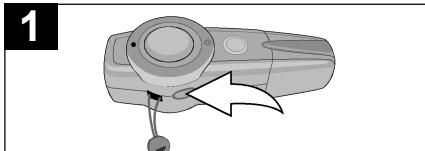
Press the Skip/Search **▶▶** button to advance the player to the beginning of the next file. Press the Skip/Search **▶▶** button repeatedly to advance the player to higher-numbered files.



Press the Skip/Search **◀◀** button to move the player back to the beginning of the currently playing file. Press the Skip/Search **◀◀** button repeatedly to move the player back to lower-numbered files.

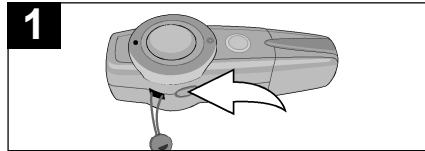
## OPERATION-VOICE MESSAGE MODE (CONTINUED)

### DELETING A FILE

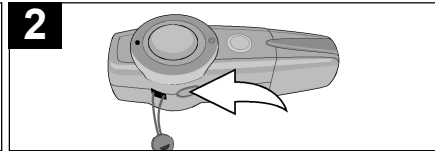


While playing the file you want to delete, press and hold the DEL/A-B button until the indicator lights red. Release the button; the playing voice message file will be deleted and the unit will enter the Stop mode.

### A-B REPEAT



To repeat a specific segment during playback of a message, press the DEL/A-B button once at the point you want to start recording; the indicator will flash green once and then continue flashing red.



Press the DEL/A-B button once at the point you want to end recording; the indicator will flash green once and then repeat the segment continuously until the DEL/A-B button is pressed again.

## TROUBLESHOOTING GUIDE

If you experience a problem with this unit, check the chart below before calling for service.

SYMPTOM	CAUSE	SOLUTION
Unit will not turn on.	Dead battery, or not installed properly.	Replace battery and install properly.
	HOLD switch is in the On position.	Slide switch to the Off position.
No sound.	Headphones are not inserted.	Insert headphones.
	Volume is set too low.	Raise the volume using the VOLUME Up button.
	The MP3 or WMA files are corrupted.	Download uncorrupted files.
	No files are in the player.	Upload files to the unit as described on pages 11 to 12.
The computer is not recognizing the player.	The player is not securely connected.	Make sure player is securely connected.
	Win98 Driver isn't installed or computer is not compatible.	Install Win98 driver and/or see pages 8 to 10 for compatibility.
No buttons work.	HOLD switch is in the On position.	Slide switch to the Off position.
WMA files with DRM can't playback.	Incorrect downloading methods.	See pages 11-12 to download WMA files with DRM.



## FORMATTING THE PLAYER

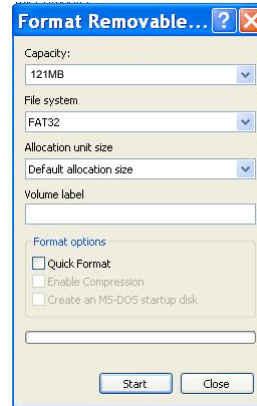
**WARNING!** Do not format this player unless it stops working and you are instructed to do so by technical support personnel.

### Formatting the Player

1. Connect the player to the computer.
2. Double click on My Computer, right click the "Removable Disk" and left click on "Format".
3. At the "Format" window, select "FAT32" from the file system pull-down menu, then click start to format the unit (see figure to the right).

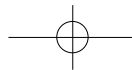
**NOTE:** Make sure you have selected "FAT32" at the file system pull-down menu, otherwise after formatting, the player will not work properly.

4. Click OK to confirm and the player will start to format.
5. When finished, click "Close" to close the Format window.



## RESETTING THE UNIT

If the player is not operating properly, try resetting it by removing the battery for a few seconds.



## SPECIFICATIONS

<b>Audio</b>	Frequency Range	20Hz – 20KHz
	Headphones Output	10mW, 32ohm(Max Vol)
	S/N Ratio	90dB (MP3)
<b>File Support</b>	MP3	MPEG 1/2/2.5 Layer 3
	WMA	Windows Media Audio (WMA file with DRM)
	Bit Rate	8kbps – 320kbps
	Tag Info	ID3 Tag (Unicode OS)
<b>General</b>	Dimension	93 x 34 x 22 mm
	Weight	40g (without battery)
	Battery	1 x AAA battery
	USB	USB 2.0
	Built-in Memory	128MB
	Max. Playtime	Approx. 12 hours (128kps, MP3)
	Supported OS	Win ME, 2000, XP and Mac OSX Win 98SE (Driver is required)
	Operating Temperature	23° F to 104° F (-5° C to 40° C)

**Specifications are subject to change without notice.**

**FOR ADDITIONAL SET-UP OR OPERATING ASSISTANCE,  
PLEASE CONTACT CUSTOMER SERVICE AT (954) 660-7100.**

**PLEASE KEEP ALL PACKAGING MATERIAL FOR AT LEAST 90  
DAYS IN CASE YOU NEED TO RETURN THIS PRODUCT TO YOUR  
PLACE OF PURCHASE.**

**FOR PARTS AND ACCESSORIES, CONTACT FOX INTERNATIONAL  
AT 1-800-321-6993.**



Hopper, Inc.  
Weston, FL  
Printed in China

